

# WRA Erp WRA90 Chiller



WRA Erp WRA90

## Performance Data

### Cooling capacity WRA Erp - WRA90

WRA Erp - WRA90.....	30.9 kW
EER .....	3.76
Total absorbed electrical power (1) .....	8.23 kW
S.E.P.R. (HT) (**) .....	5.15
Ambient temperature working limits .....	min -10 °C max 45 °C
Application .....	indoor/outdoor
Altitude above sea level .....	0 m
Outlet water temperature working limits .....	min -10 °C max 30 °C
<b>Refrigerant .....</b>	<b>R513A</b>
Refrigerant charge .....	n/a
Main power supply .....	400V/3Ph/50Hz
Secondaries voltage .....	24 Vac
Max absorbed electrical power (FLI) (4) .....	17.59 kW
Max absorbed current (FLA) (4) .....	A 34.37
Maximum inrush current (MIC) (4) .....	A 144.37

### Compressors

Compressor type .....	Scroll 1
Number of refrigerant circuits .....	1
Absorbed electrical power .....	7.8 kW

### Fans

Fan .....	1 x ø630
Fans type .....	AC
Air temperature .....	32°C
Fans part load .....	100%
Fan air flow .....	8.700 m <sup>3</sup> /h
Absorbed power at working point.....	0.48 kW

### Hydraulic

Chilled fluid .....	Water
Fluid freezing temperature .....	0°C
Max working pressure.....	PN10
Chilled fluid inlet temp. ....	20°C
Chilled fluid outlet temp. ....	15°C
Fluid flow rate .....	5.3 m <sup>3</sup> /h
Pressure drop .....	45.4 kPa
Head pressure available .....	313.2 kPa
Max chilled fluid flow (5) .....	2.4 m <sup>3</sup> /h
Max chilled fluid flow rate .....	8.4 m <sup>3</sup> /h

### Physical Attributes

Width x Height x Depth .....	895mm x 2.068mm x 1.175mm
Weight empty (4) .....	428 kg
Hydraulic connections .....	1 1/4" RP
Sound pressure level (6) .....	43.9 dB (A)
Sound power level (7) .....	75.3 dB (A)



(1) Nominal performance GROSS: the data do not consider the pump share, required to overcome the pressure drop for the solution circulation inside the exchangers.

(2) Value refers to the standard unit without options. In accordance with the Regulation (EU) 2016/2281.

(3) Data declared according to UNI EN 14511:2018

(4) Data referred to standard units without pumps and tank; according to the installed accessories, the data can suffer some variations. For the definitive data please refer to the wiring diagram of the unit (supplied with the instruction manual of the unit).

(5) Flow rate value required to calibrate the flow switch. If the optional electronic flow switch is not provided, the customer must provide a flow switch on the system and he has to calibrate it to the value indicated.


(6) Sound pressure level of a basic unit without options at full load and referred to the following conditions: evaporator fluid: 100% water, IN/OUT temp. = 20/15 °C, ambient temp. = 32°C. Average value in free field condition @ 10m distance on flat reflecting surface. Non-binding value obtained from sound power level according to EN ISO 3744.

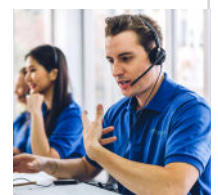
(7) Sound power level measured according to EN ISO 9614. Data of basic unit without options, full load and referred to the following conditions: evaporator fluid: 100% water, IN/OUT temp. = +12/+7 °C, ambient temp. = +35°C.

Technical data may vary without notice.

## Still have a question?

Get in touch with one of our expert team today.

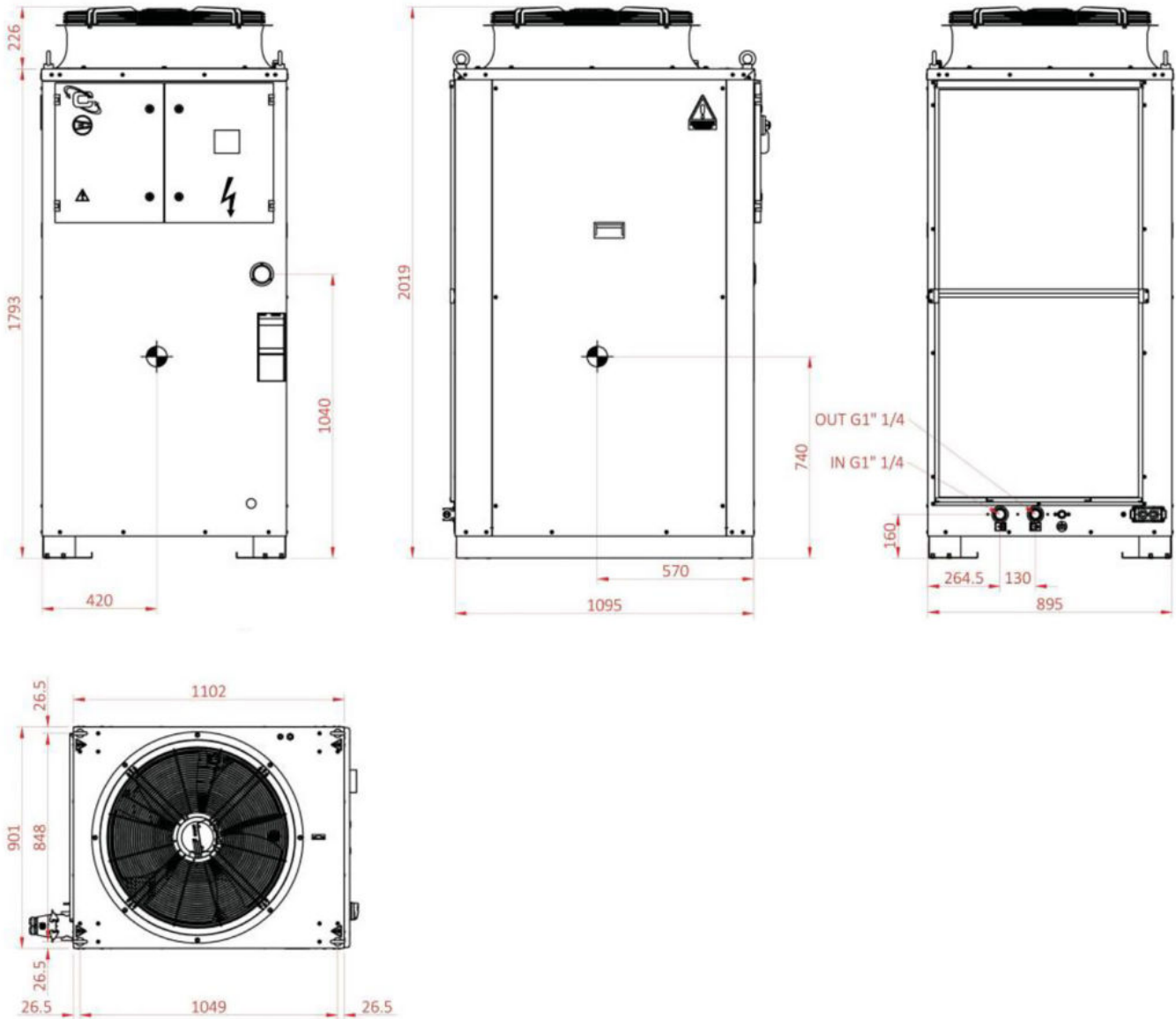
-  01422 371711
-  sales@newsome.ltd.uk
-  www.newsome.ltd.uk





# WRA Erp WRA90 Chiller

## Layout



### Physical Attributes

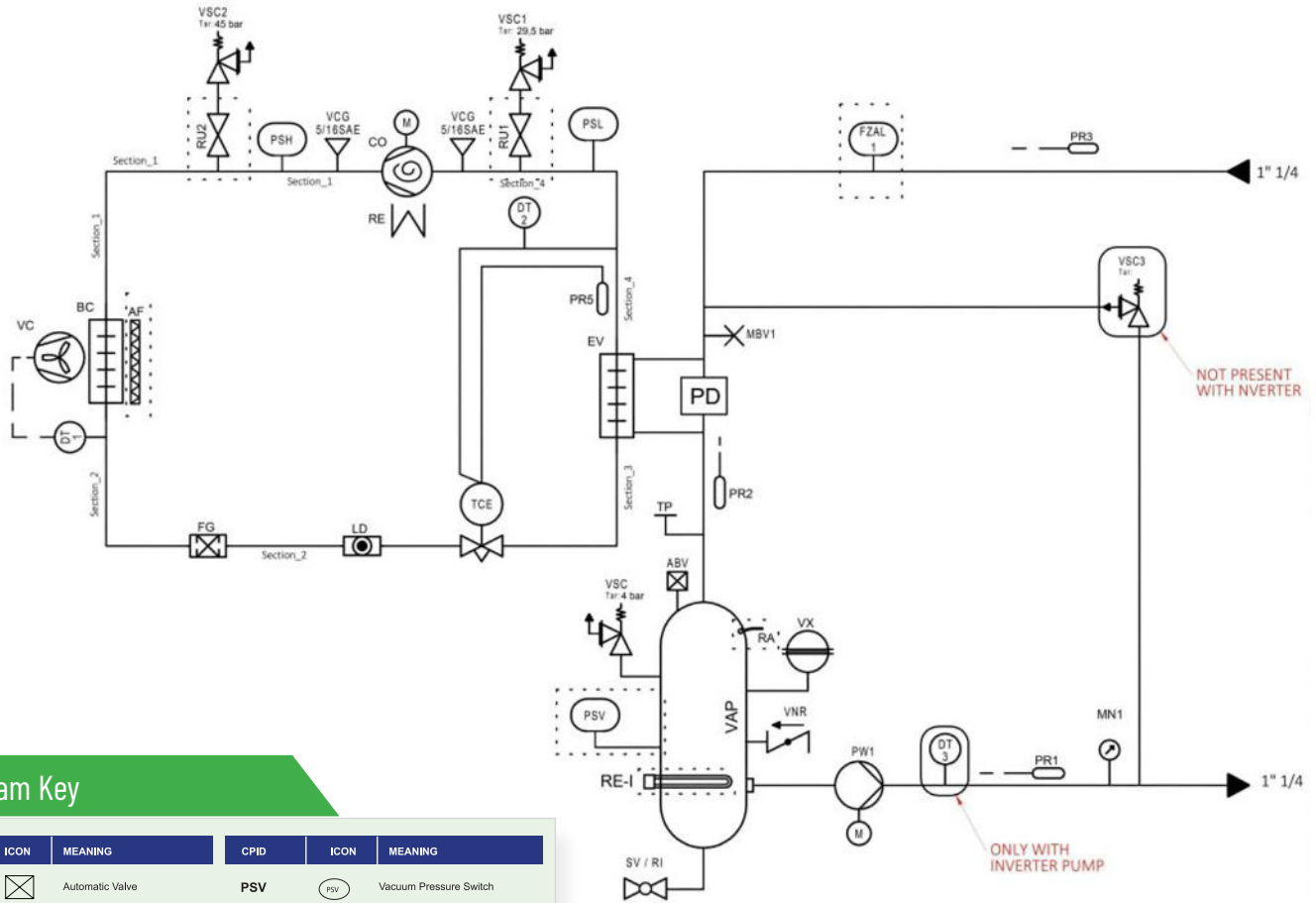
H.....	2.068mm
L.....	895mm
P.....	1.175mm





# WRA Erp WRA90 Chiller

## Refrigerant Circuit



### Diagram Key

CPID	ICON	MEANING	CPID	ICON	MEANING
ABV		Automatic Valve	PSV		Vacuum Pressure Switch
AF		Condenser Air Filter	PW		Water Pump
BPA		Automatic Bypass	RA		Automatic Filling
BC		Condenser	RE-1		Resistance
CO		Compressor	RI		Filling Cap
DT		Pressure Transducer	RU		Gas Valve
EL		Electrical Level	SV		Tub Drain
EV		Evaporator	TCE		Electronic Thermostatic Valve
FG		Coolant Filter	TCM		Mechanical Thermostatic Valve
FW		Pressure Switch	TP		Cork
FZAL		Flow Switch	TS		Threshold Thermostat
LD		Gas Injector	VA		Basin
LV		Visual Level	VAP		Pressurized Accumulation Tank
M		Motor	VC		Condenser Fan
MBV		Ball Valve For Air Venting	VCG		Charging Gas Valve
MN		Gauge	VSC		Safety Valve With Spring Return
PD		Differential Pressure Switch	VNR		Non-return Valve
PR		Probe	VSW - DV		Diaphragm Solenoid Valve
PSH		High Pressure Switch	VX		Expansion Tank
PSL		Low Pressure Switch			Refrigerant Line

### Accessories & Prices

**WRA Erp WRA90preliminary**  
 HYDRONIC KIT : P3 pump with tank ..... included  
 AMBIENT WORKING RANGE : Std ..... included  
 LIQUID WORKING RANGE : Brine ..... included  
 VERSION : Hydr. Circuit under pressure ..... included  
 Total unit price ..... (£) 0.00

**Grand Total** ..... WRA Erp WRA90: 0.00